

Designing for users with dyslexia



Do...

Don't...

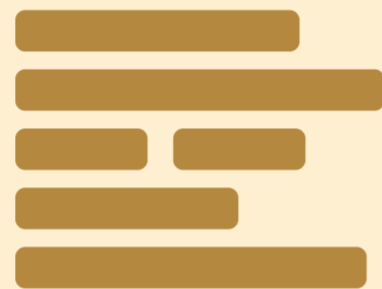
use images and diagrams to support text



use large blocks of heavy text



align text to the left and keep a consistent layout



underline words, use italics or write in capitals

DON'T DO THIS

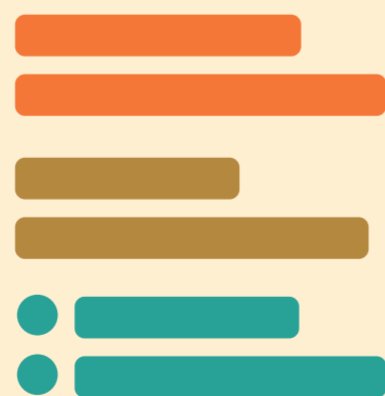
consider producing materials in other formats (for example audio or video)



force users to remember things from previous pages - give reminders and prompts



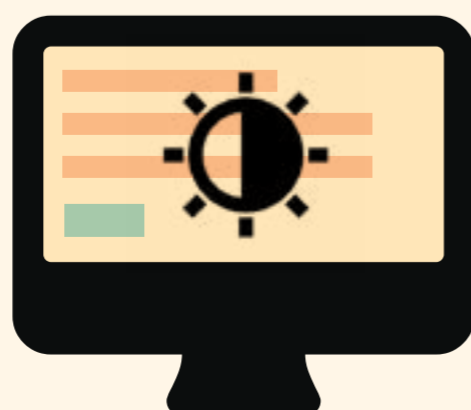
keep content short, clear and simple



rely on accurate spelling - use autocorrect or provide suggestions



let users change the contrast between background and text



put too much information in one place

